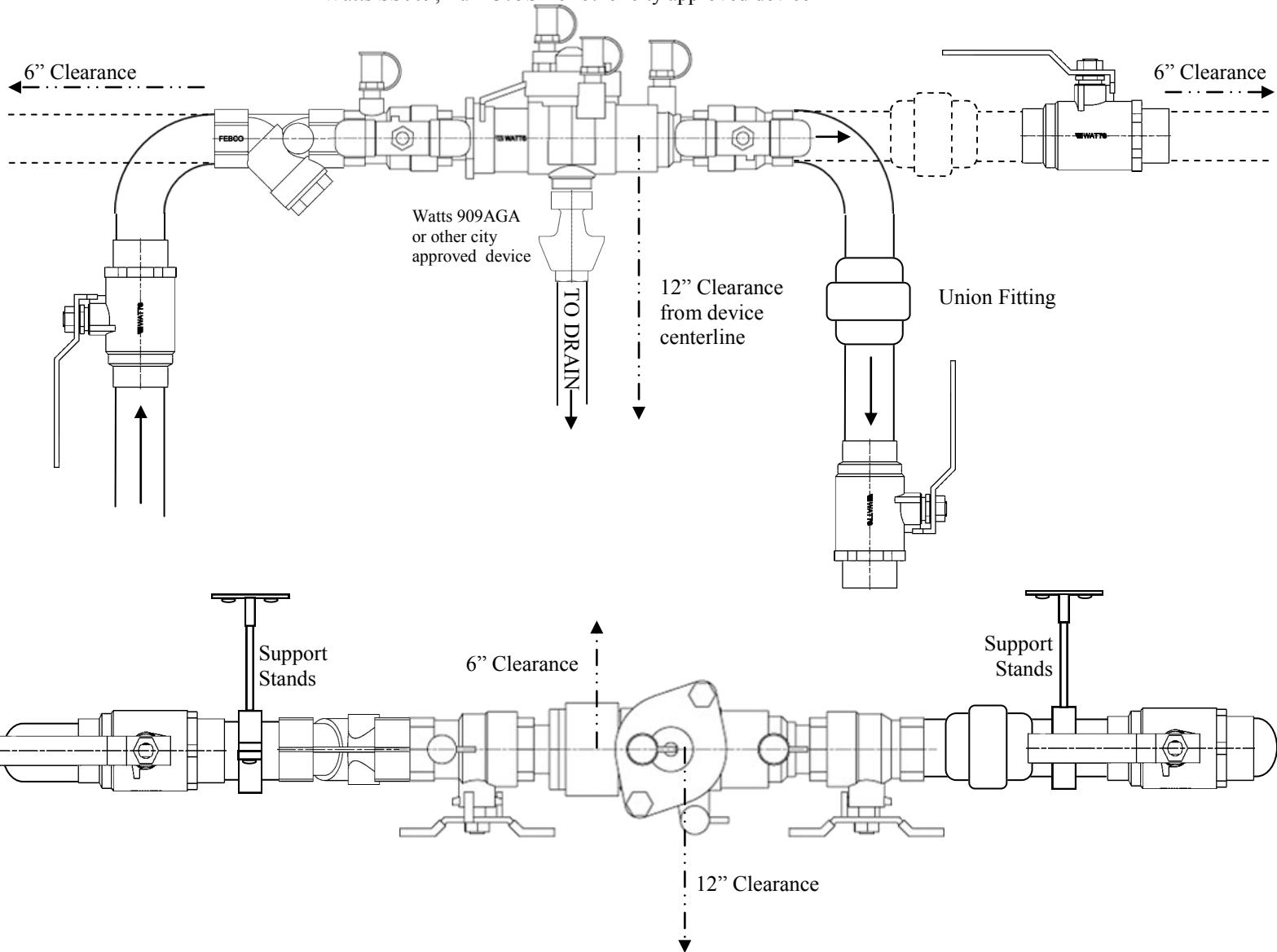


Watts SS009, Zurn 375ST or other city approved device



Notes:

All carbonated beverage dispensers require a Stainless Steel RPZ prior to any equipment.

6" of clearance on the backside of the device is required for maintenance.

12" of clearance is required on the valve and test port side of the device for testing.

12" of clearance is required below the device.

Drain lines are not to be connected directly to sewer, an Air Gap must be present of at least 1" or half the pipe diameter, whichever is greater.

If an Air-Gap device is used, it must be from the same manufacturer of the RPZ device and have NSF, UL, ASSE, and USC approval.

Any Exemptions must be approved by the Public Works Director or his/her designee.



City of Red Oak
Public Works
Department

½" - 1½" Stainless Steel Reduced Pressure
Zone Assembly Backflow Prevention Device
Installation for Carbonated Beverage
Dispensers

Public Works Department
411 W Red Oak Rd
Building D
972-576-3414