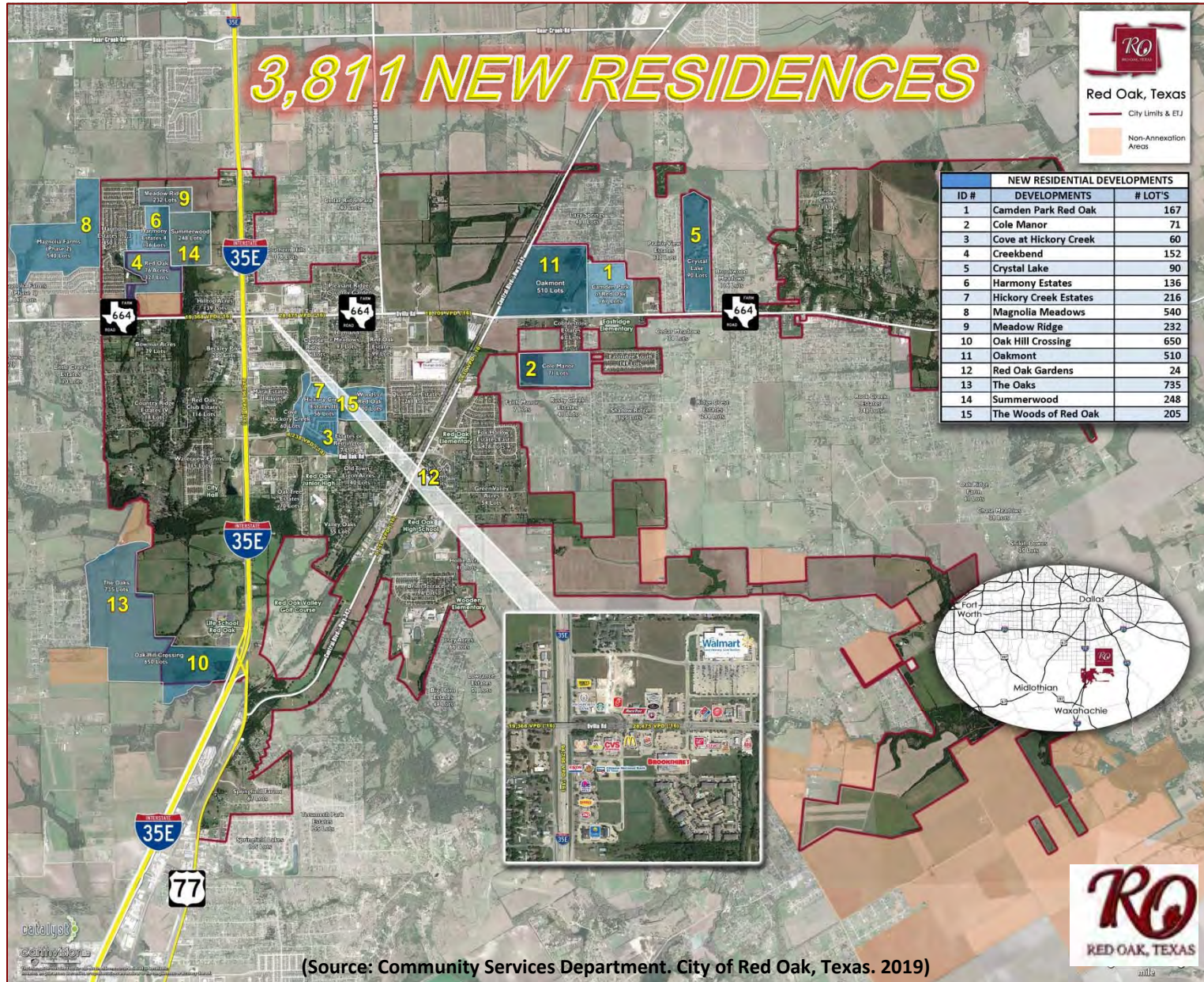




RED OAK, TEXAS

# RESIDENTIAL DEVELOPMENTS

# NEW RESIDENTIAL DEVELOPMENTS



(Source: Community Services Department. City of Red Oak, Texas. 2019)

# RESIDENTIAL DEVELOPMENTS

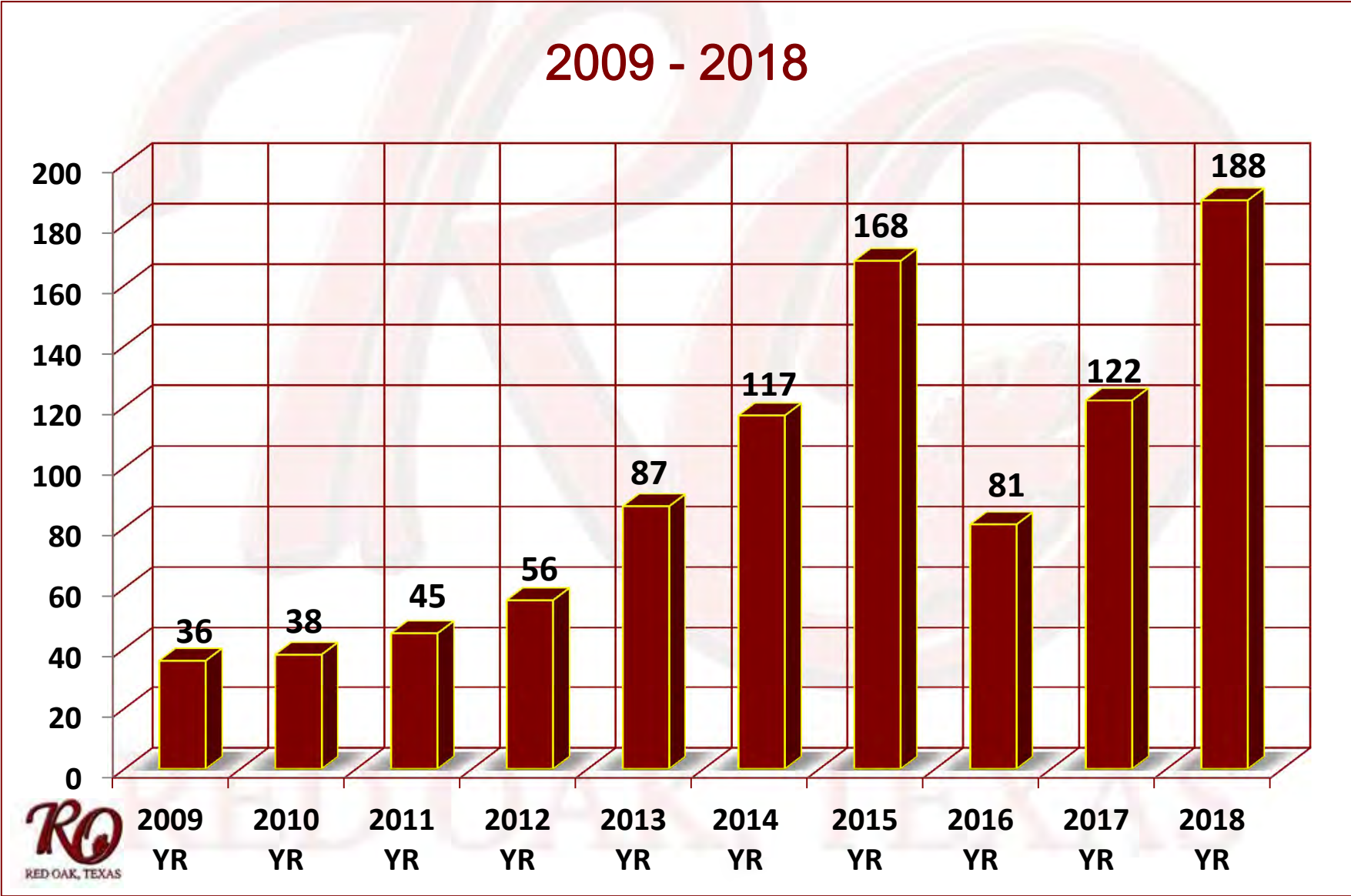
## RESIDENTIAL DEVELOPMENT & PROJECTED POPULATION GROWTH 2019 – 2024

RESIDENTIAL DEVELOPMENT	CALENDAR YEAR							NUMBER OF LOTS: FULL BUILD OUT	NUMBER OF ACRES PER DEVELOPMENT	NUMBER OF LOTS PER ACRE: FULL BUILD OUT
	2019	2020	2021	2022	2023	2024	2019 - 2024 TOTAL LOTS			
CAMDEN PARK	80	-	-	-	-	-	80	167	55.86	2.99
COLE MANOR	23	24	24	-	-	-	71	71	82.68	0.86
RED OAK GARDENS	12	12	-	-	-	-	24	24	6.71	3.58
BROTHERS BLVD. TOWNHOMES	12	-	-	-	-	-	12	12	0.94	12.71
THE COVE AT HICKORY CREEK (SRS.)	20	20	20	-	-	-	60	60	10.37	5.79
CREEK BEND	38	38	38	38	-	-	152	152	36.47	4.17
CRYSTAL LAKE	30	30	30	-	-	-	90	90	85.89	1.05
HARMONY ESTATES III	40	-	-	-	-	-	74	74	21.22	3.49
HARMONY ESTATES IV	60	-	-	-	-	-	60	60	20.29	2.96
HICKORY CREEK ESTATES II & III	9	-	-	-	-	-	9	216	52.48	4.12
LEGACY OAKS (SRS.)	66	66	-	-	-	-	132	132	16.28	8.11
MAGNOLIA MEADOWS (GLENN HTS.)	90	90	90	90	90	90	540	540	120.71	4.47
MEADOW RIDGE	50	50	50	50	32		232	232	37.55	6.18
THE OAKS	100	127	127	127	127	127	735	735	210.00	3.50
OAKMONT	85	85	85	85	85	85	510	510	165.81	3.08
OAKHILL CROSSING	110	110	108	108	108	108	650	650	210.00	3.10
SUMMERWOOD	42	42	41	41	41	41	248	248	65.24	3.80
THE WOODS of RED OAK II	66	66	-	-	-	-	132	205	57.71	3.55
NUMBER OF LOTS PER YEAR	933	760	613	539	483	451	3,811	NUMBER OF LOTS PER YEAR (2019 - 2024)		
PROJECTED POPULATION GROWTH (ANNUALIZED @ 2.95 PERSONS PER HOUSEHOLD)	2,752	2,242	1,808	1,590	1,425	1,330	11,242	PROJECTED POPULATION GROWTH (ANNUALIZED @ 2.95 PERSONS PER HOUSEHOLD)		

(SOURCE: COMMUNITY SERVICES DEPARTMENT. CITY OF RED OAK, TEXAS. 2019)



# NEW RESIDENTIAL PERMITS ISSUED



(SOURCE: COMMUNITY SERVICES DEPARTMENT. CITY OF RED OAK, TEXAS. 2019)

# CITY OF RED OAK NEW SINGLE FAMILY PERMITS

DATE	2009	2010	2011	2012	2013	2014	2015	2016	2017	2018	2019
JAN	2	4	5	1	6	8	8	15	1	7	
FEB	1	1	3	5	3	8	1	17	0	10	
MAR	1	8	5	3	8	7	24	9	5	27	
APR	5	3	8	8	18	15	13	4	2	13	
MAY	8	0	5	9	6	14	7	6	17	19	
JUN	1	2	1	6	5	14	28	7	12	10	
JUL	5	4	0	6	16	16	15	5	22	12	
AUG	2	3	6	3	11	5	21	6	16	21	
SEP	1	6	5	6	5	11	12	4	11	27	
OCT	5	2	2	2	5	7	12	4	8	9	
NOV	1	2	2	4	3	4	1	2	8	12	
DEC	<u>4</u>	<u>3</u>	<u>3</u>	<u>3</u>	<u>1</u>	<u>8</u>	<u>26</u>	<u>2</u>	<u>20</u>	<u>21</u>	
<b>TOTAL</b>	<b>36</b>	<b>38</b>	<b>45</b>	<b>56</b>	<b>87</b>	<b>117</b>	<b>168</b>	<b>81</b>	<b>122</b>	<b>188</b>	